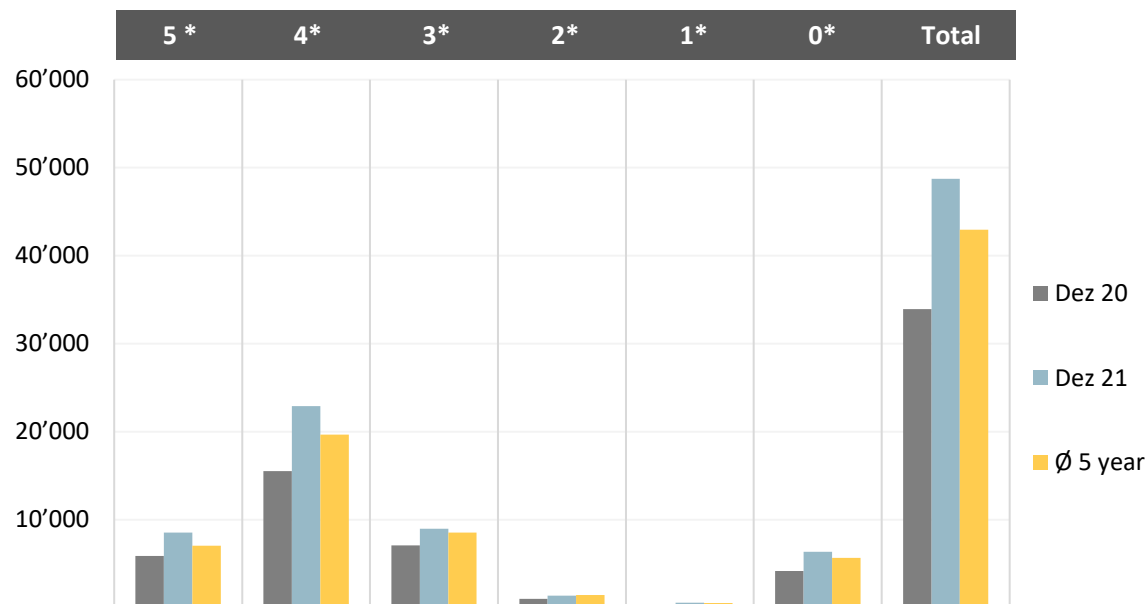


Overnight stays hotels comparison



Month	5 star	4 star	3 star	2 star	1 star	sp. hotels	Total
Dez 20	5'899	15'528	7'083	1'011	226	4'171	33'918
Dez 21	8'538	22'916	8'977	1'371	589	6'362	48'753
Ø 5 year	7'063	19'693	8'559	1'443	533	5'669	42'962
comp. to prev. year	44.7%	47.6%	26.7%	35.6%	160.6%	52.5%	43.7%
comp. Ø 5 years	20.9%	16.4%	4.9%	-5.0%	10.5%	12.2%	13.5%
capacity 2020	11'641	29'159	13'108	2'452	2'108	8'597	67'065
occupancy 2020	50.7%	53.3%	54.0%	41.2%	10.7%	48.5%	50.6%
capacity 2021	11'441	35'125	12'598	2'504	1'988	12'687	76'343
occupancy 2021	74.6%	65.2%	71.3%	54.8%	-70.4%	50.1%	63.9%