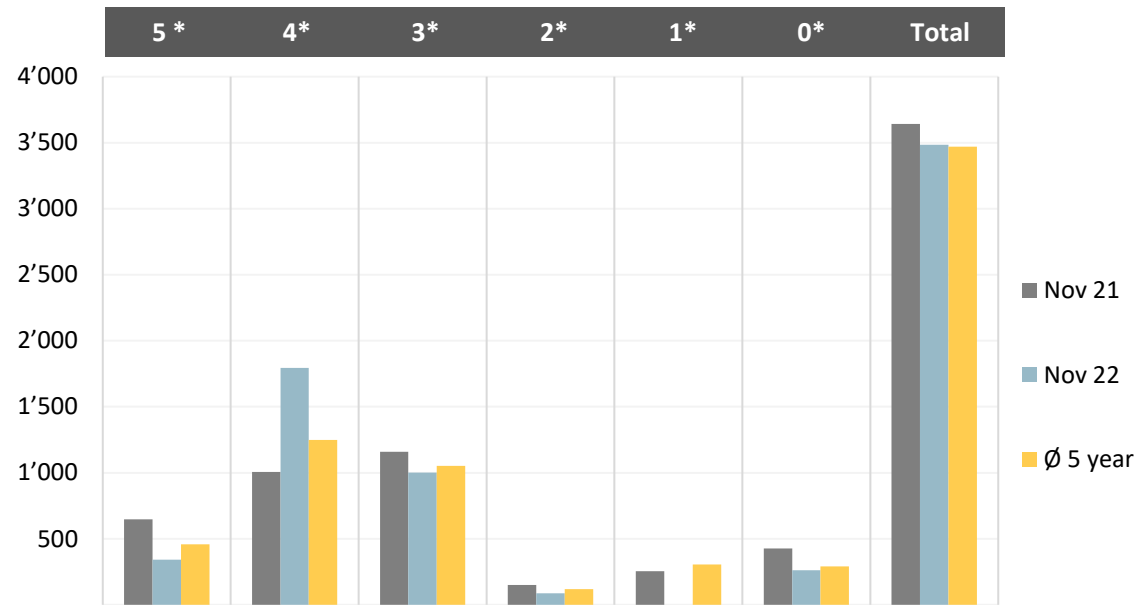


Overnight stays hotels comparison



Month	5 star	4 star	3 star	2 star	1 star	sp. hotels	Total
Nov 21	648	1'005	1'159	149	254	426	3'641
Nov 22	341	1'794	1'001	87	0	261	3'484
Ø 5 year	457	1'248	1'052	119	304	290	3'470
comp. to prev. year	-47.4%	78.5%	-13.6%	-41.6%	-100.0%	-38.7%	-4.3%
comp. Ø 5 years	34.1%	43.7%	-4.8%	-26.6%	-100.0%	-9.9%	0.4%