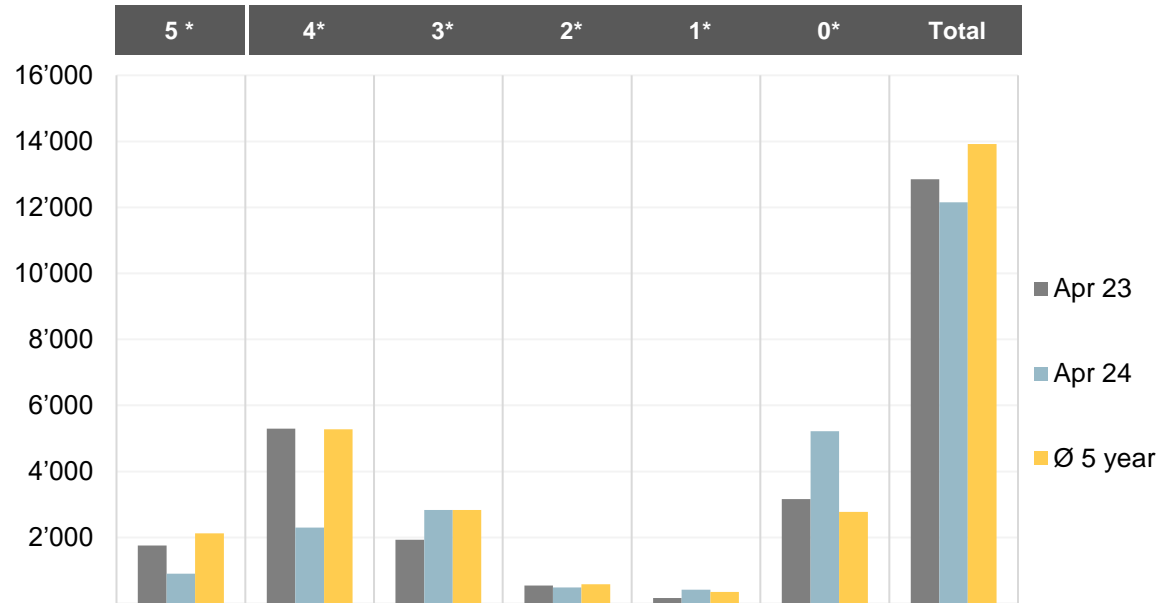


Overnight stays hotels comparison



Month March	5 star	4 star	3 star	2 star	1 star	sp. hotels	Total
Apr 23	1'754	5'299	1'928	542	162	3'163	12'848
Apr 24	900	2'301	2'827	488	418	5'216	12'150
Ø 5 year	2'120	5'273	2'833	577	349	2'771	13'923
comp. to prev. year	-48.7%	-56.6%	46.6%	-10.0%	158.0%	64.9%	-5.4%
comp. Ø 5 years	-57.5%	-56.4%	-0.2%	-15.5%	19.8%	88.2%	-12.7%
capacity 2023	2'470	6'168	2'550	496	420	4'335	16'439
occupancy 2023	71.0%	85.9%	75.6%	109.3%	38.6%	73.0%	78.2%
capacity 2024	1'019	3'681	2'935	441	520	3'728	12'324
occupancy 2024	88.3%	62.5%	96.3%	110.7%	80.4%	139.9%	98.6%